



The Pilot



Monthly Newsletter of the Lake Hartwell Boating Club

Innovation, Education, Community

From the Bridge - Charles Guderian

I am submitting this article because Pete is currently in the hospital undergoing chemo for acute myeloid leukemia. Please keep him and Rosemary in your thoughts and prayers and wish him a speedy recovery.

Our first squadron on the water activity was a big success and included vessel safety checks at Portman Marina, Big Water Marina and Hartwell Marina performed by myself and Rick Cunningham followed by a meal at The Boathouse Grill attended by roughly 33 of our hungry group.

If any of you missed the opportunity to get your free Coast Guard approved vessel safety check just give me a call at 864-477-9479 and we can arrange to get together either on the lake or at your location.

We have our bridge meetings on the second Tuesday of each month and any member can "attend". I say "attend" because since COVID our meetings have been held virtually by way of the Free Conference Call application. Now that most of us have been vaccinated and the virus is abating, I hope that these monthly meetings can be resumed IN PERSON. Prior to COVID we had been meeting at the MD360 conference room located next to Walmart in Powdersville.

Many of us have had great travel plans repeatedly postponed due to the pandemic but we are now hoping to finally get to travel again soon.

Stay tuned for more information on upcoming cruises and raft outs.

Calendar of Events

LHS&PS Calendar of Events

May

11 Executive Committee Meeting
Memorial Day Float, Bob and Sip, TBD

June

8 Executive Committee Meeting

July

13 Executive Committee
16-18 Cooper River Run



Our Bridge

Commander: Pete Stevenson, AP
president@lake-hartwell.org

Executive Officer: Charles Guderian, S
vice-president@lake-hartwell.org

Administrative Officer: Nioka Rose, S
admin@lake-hartwell.org

Education Officer: Bert Baxter, AP
education@lake-hartwell.org

Secretary: Craig McQueen, P
secretary@lake-hartwell.org

Treasurer: Jim Bolding
treasurer@lake-hartwell.org

Assistant SEO: Ray Fedele, SN

Members At Large:

Chris Rose, SN
Don Woodard, N

Nominating Committee

Chris Rose, SN 1 Yr
Lynn Solesbee, AP 2 Yrs
Billy Owens, AP 3 Yrs

Nioka Rose	05/02
Pete Stevenson	05/06
Pam Guderian	05/13
Joanmarie Bolding	05/19
Carter Stevenson	05/27
Emily Guderian	05/28
Ray Fedele	05/31

Shakedown 2021 is in the Books

A very successful Shakedown Cruise is in the books! The weather actually ended up cooperating Saturday, much to our surprise. There was a steady stream of members and others showing up to get their boats inspected. We ended up with about 17 boats and around 37 members/guests and completed a total of 15 VSC's.



Don and Janice Woodard's boat SNARK

After the inspections, we headed down to Hartwell Marina for lunch. Over 30 hungry thirsty boaters showed up at same time, but the staff at the Boathouse Grill did an outstanding job taking care of us. If you have never been to the Boathouse do yourself a favor and give them a try. I suggest the "All Day Breakfast Sandwich", it is on point.

Now I will say this, for a Shakedown there was sur-

prisingly very little drama on the water. As a matter of fact, the only thing I heard was that someone lost their VHF antenna going under the Hwy 24 bridge on the Seneca (and that's all we are saying about that).

A big thanks to everyone who brought guests and who have been talking up our club. The Lake Hartwell Boat Club picked up four new members this weekend!

Great job guys!!



A good start to boat inspections

COOPER RIVER RUN

(under the bridge, not over)



The tentative date for our Club's first annual Cooper River Run is July 16 – 18, so go ahead and set that date aside!

We are planning on launching on Lake Marion then head down the Diversion Canal to Lake Moultrie. From there we will lock thru Pinopolis Lock and down the Cooper River, while checking Nav aids on our way to Charleston.

Saturday we will do some more on the water checks in the Charleston Harbor, all the while having fun and hanging out in downtown.

Sunday we will check a few more aids on our way back up the river.

Stay tuned for more details to follow. If you want to volunteer to help out with some of the planning let me know!

Billy Owens

The Beaufort - Hilton Head Cruise and Rendezvous

This event was wonderful for so many reasons.

- *First safe get together after being vaccinated*
- *The hospitality of the Beaufort and Hilton Head Squadrons*
- *Carol Sherratt's planning*
- *The gorgeous weather*
- *The surprise appearance of the Blue Angels in Beaufort*
- *Sunset at Pinckney Island*
- *Lady D, Peter and Deb Dion's beautiful 38' Tiara*
- *Dolphins in Port Royal Sound*
- *Lunch at Lulu Bells on Daufuskie Island*
- *History Lesson by Craig Loomis*

(Did you know that Tom Hanks, in Forest Gump ran across that draw bridge in Beaufort?)

Not sure when there will be another, but you won't want to miss it.



More photos on next page



Lady D



Captain Peter Dion , Commander of Hilton Head



Delivering lunch to another member



History Tour Flotilla



Happy to say “not one of us”, seen while on the way to Daufuskie Island. Bad day for them though.



More of the flotilla in Port Royal Sound listening to Craig Loomis of Hilton Head explaining the history of this area..

Trailer Troubles: Tires

What's your attitude when you think about boat trailers? Hate? Loathing? Money pit? Nothing but trouble? Trailers are a necessary evil in boating. Either your boat constantly sits on your trailer, or hardly ever, and the trailer languishes out in the sun and weather. It sits on the ground, ignored and neglected until the next haul out or road trip. Any number of things on a trailer can cause trouble: lights, bunks, brakes, springs, bearings and...tires. If any of these fall into disrepair, they can cause damage, safety risks or citations. This month, let's look at tires.



Tire Duty Rating. Look at the tire size and rating on your trailer tires. If it starts with a "P," or nothing, before a three-digit number, it's a car tire. Don't use car tires on a trailer. Car tires have more flexibility in their sidewalls than do trailer tires, which have thicker sidewalls. Cars need sidewall flexibility for cornering. Trailers do not; they are always running straight or nearly straight relative to the road. Their sidewall stress arises from vertical compression (up and down).

Always use tires with an "ST" prefix. For larger diameter trailer tires (16-inch and up), you can use LT rated tires (light truck tires) which also have stiff sidewalls. However, you must be certain that the LT the tires you select have a load rating that suits the weight of your trailer and boat. Size for size, most trailer tires have more load carrying capacity than light truck (LT) tires.

Load Index. For any tire you contemplate purchasing, find out the Load Index (numerical code) or Load Range (alphabetic code) and make sure it is compatible with the total weight of your trailer, boat (including full tanks) *and gear*, divided by the number of tires on your trailer. Include a generous safety factor. Why? Air temperature and tire age are factors. Also, if you have a tandem trailer and blow a tire, will the remaining tires be able to handle the load until you can get to a safe place to change tires?

Inflation Pressure. Inflate the tire when cold to its *maximum psi rating* molded into the tire. Underinflated tires run hotter and fail earlier. According to BoatUS, underinflated tires are a leading cause of roadside breakdowns.

Check Your Spare. Always carry a spare in good condition and properly inflated.

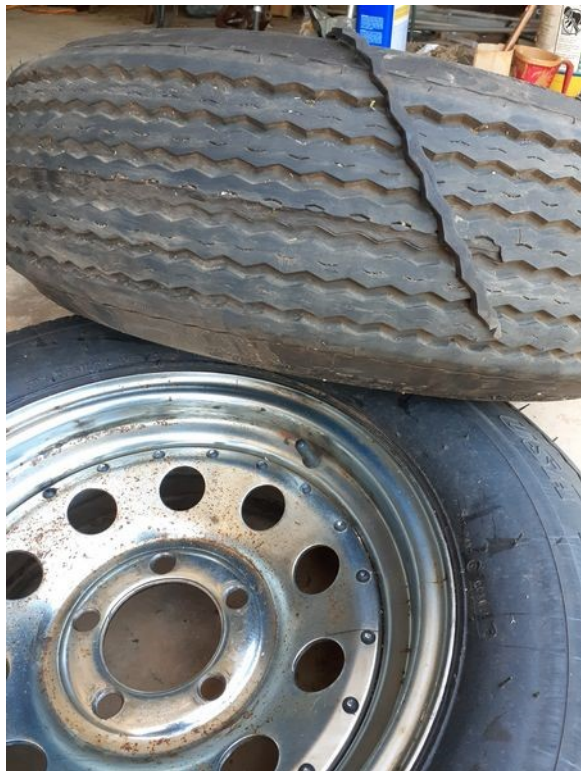
Trailer Storage. Don't let your trailer sit on the ground for long periods of time. Moisture can penetrate the tire rubber and cause a failure. Jack the wheels up and put them on jack stands or put some wood between the tires and the ground.

When To Replace. If your tread fails the classic Lincoln penny test, it's time for a new set. Even with great-looking tread, trailer tires need to be replaced after 3–5 years of use. If you use bias ply trailer tires, they fail sooner than radial ply tires, because they do not dissipate heat as well. The industry recommendation is if a tire fails on one side of a tandem-axle trailer, the adjacent tire on the same side should also be replaced, since that tire likely bore excessive weight when the tire next to it failed. When you mount new tires, balancing is optional for most trailers.

Trailer Speed. Take your time trailering. Do not exceed 65 mph. If you do, you could exceed the rating of not only your tires, but also your rims. A failed tire can damage your rig, but a failed rim can destroy both trailer and boat.

Maintain Your Bearings And Brakes. Although a topic for another day, failing bearings put out enough heat to damage tires. If you have smoked a bearing and have to replace it, your tire probably needs replacement as well. Also, dragging brakes cause both tread wear and heat damage.

Tire Repairs. Plug repair kits are ok for a temporary fix, but for safety, buy a new tire or take the wheel to a tire repair shop and get it fixed from inside. Don't run a plugged tire for very long. Sidewall damage cannot be plugged or patched. Such a tire must be replaced



This pair of bias ply ST tires was on the trailer for nearly five years. They show minimal tread wear and no sidewall cracks. Yet, a chunk of the central tread broke off, as shown. Time for a new pair.



Don't rely on an old spare like this. Although it has pretty good tread remaining, the label shows it to be a "P-metric" automobile tire. The sidewall is seriously cracked. This tire would not last long on a summer trip.

References:

<https://www.boatus.com/expert-advice/expert-advice-archive/2012/june/11-things-to-know-about-boat-trailer-tires>

Vessel Safety Check Plans for 2021

The Vessel Safety Check plan to defeat that miserable Covid virus is to conduct responsible, safe, socially distanced Vessel Safety Checks just as we have in the past.

The general planning schedule for vessel safety checks is presented below. Of course, it is a little premature to set out specific dates so you can look at the following as a warning order. As the club calendar firms up and we get a little closer, Chairman Rick Cunningham will publish specific dates and look for volunteers to assist in the inspections.

Please be aware that the Big Water date, the Jocassee dates and the Poker Run date will be set when we hear from the Ranger at Lake Jocassee, the Corps, the people at Meals on Wheels in Anderson and others.

Safe Boating Week	Possibly Big Water Marina: May 22
Lake Jocassee	Typically early May and June
Poker Run	Late June most likely at Big Water
Other events and times	We are seeking opportunities like the Fourth of July

Please be aware that we are a little short handed in numbers of inspectors. For the moment we have four qualified VSC inspectors: Bert Baxter, Charles Guderian, myself (Pete Stevenson) and our leader Rick Cunningham. Any one or all of us would be pleased to assist any member who would like to become a Vessel Safety Check inspector.

Contact Rick at p_cunningham@bellsouth.net or myself.

Pete Stevenson

Learn about DAN Boater Safety and Travel Benefits

America's Boating Club has partnered with DAN Boater to offer safety and travel benefits to our members. Your new benefits include an emergency hotline, a nonemergency medical information line, worldwide medical evacuation, medical repatriation, search and rescue expenses, and much more.

Visit www.danboater.org/abc to get complete details on this valuable benefit program and print your DAN Boater benefits card.



Have your certificate number and PIN handy when logging in.

You can find details about all DAN Boater benefits, including coverage amounts, in the DAN Boater Benefits Handbook. If you have questions not answered in the handbook, call the DAN Boater Member Support Team at 919-490-2011.

Keep in mind that DAN Boater cannot answer questions related to your America's Boating Club membership. For membership info, call 888-367-8777 for America's Boating Club Customer Service.



Lake Hartwell Boating Club

Executive Committee Meeting Minutes

April 13, 2021

Call to Order

A quorum was established
Charles Guderian lead the invocation
Billy Owens lead the Pledge of Allegiance
Minutes of the April Ex Com meeting were approved

Ad-Hoc Committees No Report

Department Reports

Commander – Pete Stevenson Unable to attend.

Past Commander – Billy Owens New ship store manager, Kristy Boswell placing orders to restock, looking for suggestions from membership

Treasurer – Jim Bolding \$\$3852 in bank. Jim will investigate combining 2 CDS maturing in May , motion made to roll maturing CDS into 3 - 6 month CD until rates improve. Motion approved by voice vote

Administration-Nioka Rose

Membership

Time to start thinking about the new Bridge

Meetings & Programs

The District 26 Cruise and Rendezvous has 60 + members registered

Boating activities

Cooper River Cruise Shakedown cruise will be held on April 17th with lunch at the Boathouse Grill.

Canoe and kayak trips are being researched for warmer weather.

D/26 Cruise and Rendezvous will be April 21-25 in the Beaufort and Hilton Head area. The Blue Angel appearance has been cancelled.

Education – Bert Baxter - Due to Covid, programs hopefully will resume in the fall. The first priority is getting instructors recertified.. Nioka will look into ordering free ABC manuals.

Executive – Charles Guderian

Co-op Charting

Co-op - all Zones completed and submitted except 4D, a lot of discrepancies have been noted
VSC - 2 locations planned for shakedown- big water and Portman . Decals are still needed.

Secretary – Craig McQueen

Sunshine Committee No Report

Poinsett Pilot – Monthly Pilot articles due by the 20th

FTB Pete, Boating Activity Billy, Safety Don, reprint the D/26 C&R

Members at Large –Chris Rose, Don Woodard

Don is looking for someone to assist with uploading photos and with web duties

Old Business No report

New Business No Report

The next meeting - will be at 6:45 pm on Tuesday, May 11, 2021 by Free Conference Call.

Adjourn at 7:00 pm

Submitted by Craig McQueen

Ship's Store



Port Authority Rapid Dry Polo.

Port Authority Rapid Dry Polo. Soft and breathable, this baby pique polo has our exclusive Rapid Dry moisture-wicking technology. This unique knit has a soft inner layer which wicks moisture away from your skin to the shirt's surface where it quickly disperses and evaporates. 5.6-ounce, 60/40 cotton/poly Double-needle stitching throughout 3-button placket Pearlized buttons Open hem sleeves Side vents

Price \$26.00

Colors: White; Classic Navy; Dark Green; Royal; Jet Black; Red; Charcoal; Seafoam; Stone; Riviera Blue; Boysenberry Pink;

Moroccan Blue; Dusty Purple

Sizes: XS; S; M; L; XL; 2XL; 3XL; 4XL; 5XL; 6XL



Port Authority Outdoor Wide-Brim Hat.

Port Authority Outdoor Wide-Brim Hat. Trail-ready, this high-performance essential features No Fly Zone insect repellent technology, UPF 30+ sun protection, a concealable sun flap and a moisture wicking sweatband. The foam brim keeps it afloat in water. Fabric: 75/25 poly/nylon rip stop Structure: Unstructured Features: Adjustable cord at crown, clip-on and adjustable drawcord

Price \$20.00

Colors: Coffee Cream; Olive Leaf; Stone

Sizes: S/M; L/XL



Sport-Tek 1/4-Zip Sweatshirt.

Sport-Tek 1/4-Zip Sweatshirt. These durable, colorfast quarter-zips feature a better fit with minimal shrinkage, as well as 2x2 rib knit cuffs and waistband. 9-ounce, 65/35 ring spun combed cotton/poly fleece Twill-taped neck 2x2 rib knit cuffs and hem with spandex *Please note: This product is transitioning from woven labels to tag-free labels. Your order may contain a combination of both labels

Price \$31.00

Colors: Athletic Heather; Black; Forest Green; Graphite Heather; Maroon; True Navy; True Red; True Royal; Vintage Heather; White

Sizes: XS; S; M; L; XL; 2XL; 3XL; 4X

Ship's Store



Eddie Bauer - Long Sleeve Fishing Shirt.

Eddie Bauer - Long Sleeve Fishing Shirt. Designed with the needs of fishermen in mind--but equally comfortable anywhere--this shirt has all the bells and whistles: a built-in rod holder, two large fly box pockets, utility loop and more. 3.5-ounce, 100% cotton poplin 100% polyester mesh upper back lining Built-in rod holder Two large fly box pockets with hook and loop closures Zippered chest pocket Utility loop and tool holder Cape back with mesh ...

Price \$47.00



Eddie Bauer - Short Sleeve Fishing Shirt.

Eddie Bauer - Short Sleeve Fishing Shirt. Designed with the needs of fishermen in mind--but equally comfortable anywhere--this shirt has all the bells and whistles: a built-in rod holder, two large fly box pockets, utility loop and more. 3.5-ounce, 100% cotton poplin 100% polyester mesh upper back lining Built-in rod holder Two large fly box pockets with hook and loop closures Zippered chest pocket Utility loop and tool holder Cape back with mesh...

Price \$41.00

Colors: Blue Gill; Driftwood; Goldenrod Yellow; Seagrass Green; White
Sizes: XS; S; M; L; XL; 2XL; 3XL; 4XL



Sport-Tek Ladies Sport-Wick Textured Colorblock 1/4-Zip Pullover

Sport-Tek Ladies Sport-Wick Textured Colorblock 1/4-Zip Pullover. Contrast sleeve stripes and texture give this moisture-wicking pullover an unrivaled look. 100% polyester Gently contoured silhouette Cadet collar Tag-free label Taped neck Front and back princess seams Contrast Vislon zipper Angled chin guard for additional comfort Set-in sleeves Thumbholes to keep hands warm Open cuffs and hem Slight drop tail hem

Colors: Black/ Iron Grey; Iron Grey/ Black; Pink Raspberry/ Iron Grey; True Royal/ Black; White/ Iron Grey

Sizes: XS; S; M; L; XL; 3XL; 4XL; XXL

Price \$33.00

Ship's Store



12" by 18" Burgee
Price 26.00



4" Burgee Decal
1.00



For Boaters, By BoatersSM



The Pilot

Official monthly publication of the Lake Hartwell Boating Club

Editor: Nioka Rose

Proofreaders: Pete & Rosemary Stevenson

Distribution: Don Woodard

Items are due on the 20th of the month preceding publication. Articles should be emailed to:

editor@lake-hartwell.org.

The editor reserves the right to edit submissions in a style that best serves the needs of LHS&PS, District 26, and United States Power Squadrons©

Articles, opinions, and advertisements contained herein do not necessarily reflect any endorsement or policy from either the USPS or LHS&PS unless so stated.